

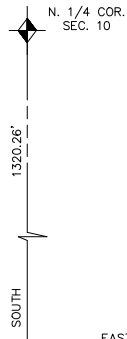
PART OF N.E. 1/4, SEC. 10, T.5N., R.1W., S.L.B. & M.

# ENGLAND HILLS SUBDIVISION

IN OGDEN CITY

SCALE 1" = 50'

TAXING UNIT: 25



SEE PAGE 95

SEE PAGE 86-1

SEE PAGE 88

SEE PAGE 90

SEE PAGE 86-1

FOR COMPLETE ENG DATA SEE  
ORIGINAL DEDICATION PLAT IN  
BOOK 19, PAGE 18 OF RECORDS.

7' UTILITY & DRAINAGE EASEMENTS EACH  
SIDE OF PROPERTY LINES AS INDICATED  
BY DASHED LINES EXCEPT AS OTHERWISE  
SHOWN.

